

Aomori Prefecture Upcycle Forum Now Recruiting Member Companies!

Our forum is a community aimed at fostering new business developments by sharing information and building networks related to the upcycling industry. We encourage companies and organizations interested in upcycling-related businesses to join us!

Industries: Food & Beverage, Raw Materials, Plastics, Cosmetics, Retailers, etc.

**Free
Member
ship**

Are You Facing These Challenges?

Want to make better
use of unused
resources?



Want to find partners
in the upcycling
business?



Want to expand
the market for your
upcycled products?



Membership Eligibility

(1) Applicants must meet one of the following criteria:

A. A business (corporation or sole proprietorship) or organization with a headquarters or office in Aomori Prefecture

B. A business (corporation or sole proprietorship) or organization that supports the promotion of upcycling in Aomori Prefecture

(2) Applicants must not be organizations whose primary purpose is religious or political activities. They must also not be organizations that endorse, support, or oppose specific public officials, political candidates or parties. Additionally, applicants must not be entities under the control of organized crime or members of a gang.

Key Focus Areas

Recognizing that different companies are involved depending on the type of final product, the Aomori Upcycle Forum has identified two key focus areas: Materials and Functionality.

Materials

Bioplastics, Apple Leather, etc.

Functionality

Cosmetics, Health Foods, etc.

Note: The energy sector is not included.

Details on How to Join ►

https://www.pref.aomori.lg.jp/soshiki/sangyo/chikikigyo/upcycle_forum.html



Contact Information

**Aomori Prefectural Government Commerce, Industry and Labor Department:
Regional Business Support & Management Improvement Group**

1-1-1 Nagashima, Aomori City, Aomori Prefecture, 030-8570, Japan

Phone: 017-734-9134

Email: kigyoshien@pref.aomori.lg.jp

Showcasing examples of how ideas and technology have
enhanced the value of unused resources

UpCycle!

UPCYCLE STORIES

Discover unused resources
from Aomori in brand new forms.



What is Upcycling?

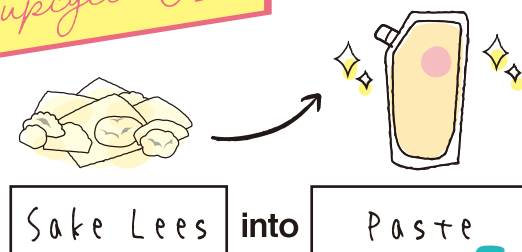
Upcycling is the process of giving new value to materials that would otherwise be discarded and repurposing them in a meaningful way.

It is the process of transforming unused resources and by-products* that were traditionally considered unnecessary or were not effectively utilized into higher-value products through creative ideas and technology. As more companies adopt SDG initiatives, the expansion of new markets is expected in this field.

*Examples of unused resources and by-products: fruit pulp, fruit peels and cores, sake lees, scallop shells, etc.



upcycle 01



UPCYCLE!

A-aji Create Co., Ltd.

エーアジクリエイト株式会社



Brewery-Label Sake Lees Combined with Aomori's Apple Juice to Create Original Apple Sake Lees Paste

A brewery in Aomori Prefecture approached A-aji Create, a food processing company in Tsugaru City, with the idea of developing a product using sake lees. In response, A-aji Create developed "Original Apple Sake Lees Paste," a seasoning made from sake lees sourced from local breweries and Aomori-produced apple juice. Upon learning that some breweries were discarding their sake lees, the company created this product with the hope of contributing to brewery revenue.

There are 15 varieties, each made using sake lees from a different brewery in Aomori Prefecture, allowing customers to enjoy the distinct aromas and flavors of each. Those with a strong aroma of ginjo premium sake pair well with meat dishes, while milder varieties complement seafood. Original Apple Sake Lees Paste is also recommended as a hidden flavor enhancer for ramen and stir-fried dishes.

COMPANY DATA

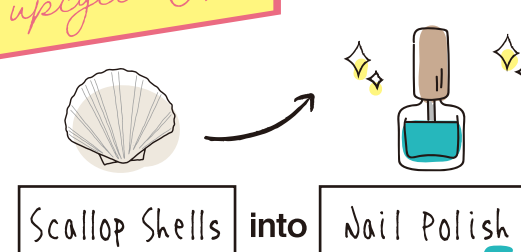
A-aji Create Co., Ltd.

39-3 Kizukuri Chiyomachi, Tsugaru City, Aomori Prefecture 038-3145, Japan
☎ 0173-42-2062
E-mail aajicreate@osakin.com
▶Website <https://osakin.com>

Website



upcycle 02



UPCYCLE!

YAMAJIN Co., Ltd.

株式会社山神

From the Ocean to the Future: Transforming Discarded Scallop Shells into Nail Polish

YAMAJIN Co., Ltd. is a fishing company in Mutsu Bay (Aomori Prefecture) that manages the entire process of scallop farming and processing. The company's processing of about 10,000 tons of scallops annually generates about 8,000 tons of discarded scallop shells each year, leading to concerns about waste disposal. Recognizing this problem, they launched an upcycling project to reduce waste, create an eco-friendly working environment, and develop innovative products with exciting value. This led to the development of CYAN, one-day nail polish made from powdered scallop shells that can be easily removed with warm water. Because it is free of organic solvents, it does not have the strong chemical odor typical of nail polish. They also developed a more environmentally friendly detergent using discarded shells. This project is driven by their commitment to protect the ocean where scallops grow for future generations.



COMPANY DATA

YAMAJIN Co., Ltd.

262-5 Okada, Aburakawa, Aomori City, Aomori Prefecture 038-0059, Japan
☎ 017-763-3380 fax. 017-788-4481
E-mail info@hotate-yamajin.co.jp
▶Website <https://hotate-yamajin.co.jp>

Website



Instagram



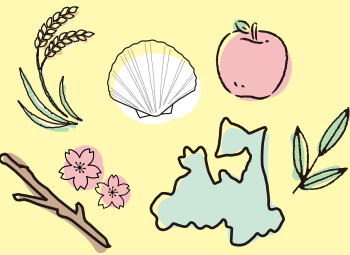
YAMAJIN.SHELLCYCLE



Initiatives in Aomori

Aomori Prefecture **supports businesses** engaged in the production of upcycled materials and products made from locally sourced resources.

Aomori Prefecture is rich in regional resources such as apples and scallops. However, the production and processing of these products also generate unused resources like fruit pulp, pruned branches, and shells. To address this, Aomori Prefecture supports businesses working to create new materials and products using these locally sourced unused resources.



upcycle 03

Apple Juice Residue into Skin Toner

UPCYCLE!

NIHON HARUMA Co., Ltd.

日本ハルマ株式会社

Using One Thing in Its Entirety: The "Total Utilization" Philosophy

NIHON HARUMA Co., Ltd. utilizes patented equipment and technology to produce high-quality natural materials, such as Sasa kurilensis water and apple water, all of which are obtained from nature's bounty from the local region. In addition, the company uses unique ethanol extraction technology to extract functional ingredients such as apple ceramides from apple juice residue. All of these processes follow the "Total Utilization" philosophy of NIHON HARUMA, ensuring that apples are used in their entirety as a raw materials without creating waste.

The apple mist "APPA TE DORA," made from apple juice residue, was also developed based on this philosophy. It refines the texture of the skin, enhances the complexion so it is fresh and dewy, and provides an invigorating apple-infused sensory experience as a zero-emission skin toner.



Winner of the OMOTENASHI Selection 2024 Gold Award

APPA TE DORA
Skin toner extracted from apple juice residue



Developed in collaboration with Hirosaki University, APPLE KURILE CIDER is made using Aomori's original Apple Kurile seasoning.



Cell Pure: A refreshing drink made from wild Sasa kurilensis bamboo grown in the primeval forests of Mt. Hakkoda.

COMPANY DATA

NIHON HARUMA Co., Ltd.

398 Kanda, Katada, Hirosaki City,
Aomori Prefecture 036-8052, Japan
☎ 0172-31-6580 fax. 0172-31-6581
E-mail info@nihonharuma.com
▶Website https://www.nihonharuma.com



Website



Instagram

NIHONHARUMA



upcycle 04

Urushi Seeds into Tea

UPCYCLE!

Kirin Co., Ltd.

A Facility that Provides Employment Support to People with Disabilities: Kirin no Sato

株式会社きりん 就労継続支援B型事業所きりんの里

Utilizing Safe, Unused Local Resources to Create Ethical Products that Support Employment for People with Disabilities

Kirin Co., Ltd. launched the "Kirin Urushi Project" with the goal of revitalizing the local urushi lacquer tree industry, preserving the tsumaru lacquer culture, and promoting employment opportunities for people with disabilities. In collaboration with local businesses, Kirin has established a sustainable production cycle that integrates seed cultivation, planting, tree management, and secondary processing of by-products. In addition, people with disabilities who are members Kirin no Sato, a facility that provides employment support to such people, actively participate in every stage of production. Kirin Urushi Tea is made from urushi lacquer tree seeds that did not germinate during the seedling production process. These seeds would normally be discarded, but this ethical product reuses them to ensure they are not wasted. After carefully removing impurities by hand through a double salt water selection process, the seeds are slowly roasted using a unique method that ensures they are heated to the core. Finally, the seeds are smoked with Aomori Hiba wood chips, giving them a rich and aromatic aroma.



Kirin Urushi Tea
Made from ungerminated lacquer tree seeds



COMPANY DATA

Kirin Co., Ltd.

A Facility that Provides Employment Support to People with Disabilities: Kirin no Sato

18-20 Nakasado Minamida, Hirakawa City, Aomori Prefecture 036-0211, Japan
☎ 0172-88-7656 fax. 0172-88-7658
E-mail kirin@kjb.biglobe.ne.jp



Instagram

KIRIN.NO.SATO.KOBAMAYU



Past Examples

Through Aomori Prefecture's initiatives, a variety of upcycled products have been created beyond those introduced in this pamphlet.



Rediscovering Aomori's Unique Charm by Upcycling Unused Apple and Cherry Tree Resources

Mieshi LLC, a start-up company originating from Hirosaki University, upcycles unused resources such as apple and cherry tree prunings to create new value and highlight the region's unique appeal. In the future, they plan to expand their upcycling initiatives to include unused resources from various regions.

One of their key projects involves using pruned apple wood to make Apple Mieshi Paper, which is then used for capsule toys, calendars, and business cards related to Hirosaki University's Neputa Festival. Mieshi LLC also develops washi paper especially for Neputa/Neputa floats and other related applications.

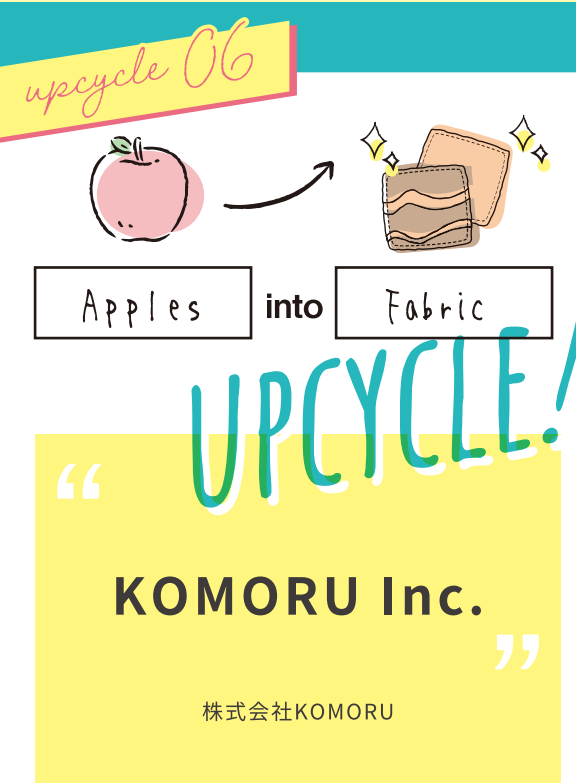
Hirosaki University's Neputa float capsule toy made using Apple Mieshi Paper



COMPANY DATA

Mieshi LLC (Start-up company from Hirosaki University)

Hirosaki City, Aomori Prefecture 036-8164, Japan
E-mail yamashina@mieshi.jp
►Website <https://www.big-advance.site/s/188/1303>



From Apple Pomace to Fabric: Adam, The Innovative Fabric

KOMORU Inc. is a startup company headquartered in Goshogawara, Aomori Prefecture, that was founded in 2021. The company engages in planning, production, and hospitality.

Since its inception, KOMORU has been working to promote the Tsugaru region's unique climate and materials throughout Japan. As part of this initiative, they developed Adam, a PVC sheet mixed with apple pomace.

Adam is left uncolored, allowing its natural apple-derived hues and textures to be appreciated. By making the apple pomace visible within the material, the design aims to create a sensory experience.



COMPANY DATA

KOMORU Inc.

40-1 Umetsu Fukuura, Goshogawara City, Aomori Prefecture 037-0022, Japan
E-Mail info@komoru.co.jp
►Website <https://a-d-a-m.jp>

